

# Tips & Tricks for the synOcta® 1.5 Screw-Retained Abutment

Abutment for transocclusal screw-retained crowns, bridges and bars.

The synOcta® 1.5 is an elementary part of the TL system, providing a secure and trustworthy link between implants and prosthetic components, with all the flexibility you need.



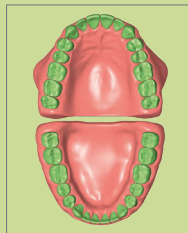
implant shoulders  
Ø 4.8 mm RN  
(048.601)



implant shoulders  
Ø 6.5 mm WN  
(048.603)

## WHERE TO USE?

Especially suitable for building bar constructions.  
Can also be used for all other indications.



What for?	Single unit	Multi-unit	Bars
Workflow	Traditional		
Platform	RN		WN

## ASSOCIATED PRODUCTS



Art. No. 048.227  
RN synOcta® Plastic Coping  
without internal octagon for bridge,  
for use with 048.601



Art. No. 048.229  
RN synOcta® Plastic Coping  
with internal octagon for crown,  
for use with 048.601



Art. No. 048.632  
RN synOcta® Plastic Coping  
without internal octagon for bridge,  
for use with 048.601  
(includes Modeling Aid)



Art. No. 048.633  
RN synOcta® Plastic Coping  
with internal octagon for crown,  
for use with 048.601  
(includes Modeling Aid)



Art. No. 048.666  
WN synOcta® Plastic Coping  
without internal octagon for bridge,  
for use with 048.603



Art. No. 048.667  
WN synOcta® Plastic Coping  
with internal octagon for crown,  
for use with 048.603



Art. No. 048.638  
WN synOcta® Plastic Coping  
without internal octagon for bridge,  
for use with 048.603  
(includes Modeling Aid)



Art. No. 048.639  
WN synOcta® Plastic Coping  
with internal octagon for crown,  
for use with 048.603  
(includes Modeling Aid)

### Different coping materials available

Freedom of choice for the prosthetic restoration – from cost-effective burn-out copings to premium gold copings.

## TIPS FOR THE LAB TECHNICIAN

- Use the synOcta® 1.5 like an adapter. It gives you the flexibility to customize a prosthetic restoration on top!
- With the synOcta® gold coping you can customize the restoration traditionally if you are unable to use the digital workflow. You can also order bars directly from Createch.
- As applicable, you can mix old restorations using the Octa® abutment together with the synOcta® 1.5.
- When using the burn-out coping, remember to remove the snap-on lip after the casting procedure. This is an important step that can prevent the destruction of your restoration.

Coping for crown



Inner geometry of coping enables casting rotational lock for crowns ...

Coping for bridge



... and rotation for bridges

## INFORMATION ABOUT THE SYNOCSTA® 1.5 SCREW-RETAINED ABUTMENT

Made from 100% pure Ti grade 4



Perfect fit with the SCS screw-driver for unequalled comfort of use

Ready-to-use thanks to its integrated screw

synOcta® octagon connection allows abutment repositioning

8° cone morse taper for reliable vertical positioning

High-end manufacturing with unique design, made from 3 pieces and incorporating a welded screw thread

The shortest possible abutment height giving you all the stability needed for the restoration, as well as the flexibility to correct small divergences

8 facets allowing positioning and retention of the crown



Rely on the Straumann original connection. Engineered according to exact knowledge of measurements and tolerances

Restoration sits on the implant shoulders

## AN IDEAL ABUTMENT FOR BUILDING BAR CONSTRUCTIONS

### WORKFLOW SNAPSHOT



1

Start fabrication



2

Position in octagon



3

Position copings



4

Fabricate and cast framework



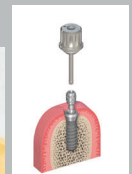
5

Remove the lip



6

Veneer, trim, finish  
Fit the restoration



7

Send restoration to dentist



For more information, please refer to the step-by-step procedure "Basic Information on Straumann® synOcta® Prosthetic System" 152.255 or contact your Straumann® representative.