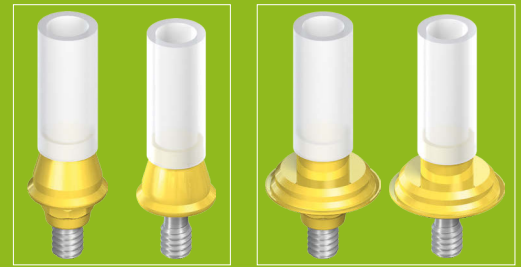


# Tips & Tricks for the synOcta® Gold Abutment

The customizable one-piece solution for anterior zone esthetics.

Easy-to-process combining coping and abutment.

The synOcta® Gold Abutment for direct cast-on procedures simplifies production by substantially reducing required handling steps. With the option to create a screw or cement-retained restoration, it offers the prosthetic versatility needed to achieve individual and esthetic results.



synOcta® Gold Abutment  
\*048.642  
\*\*048.802  
incl. screw 048.356

synOcta® Gold Abutment  
\*048.644  
\*\*048.803  
incl. screw 048.356

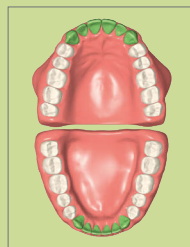
\* for crowns \*\* for bridges

## WHERE TO USE?

Especially suitable for the restoration of anterior esthetics zone.

Can also be used for all other indications.

A great customizable option when the digital workflow is not available.



What for?	Single unit	Multi-unit
Fixation	Cement – retained	Screw – retained
Workflow	Traditional	
Platform	RN	WN

## WHAT FOR?



For screw-retained crowns or for cement-retained crowns and bridges as a customized mesostructure

## TIPS FOR THE LAB TECHNICIAN

- To enable access and visualization after the casting, you can trim the modelling-aid cylinder to the level of the adjacent teeth before doing the wax-up. This will leave a helpful gold ring opening in your construction.
- After using the hammer to devest your construction, look at appearance of the casted surface. If it is shiny, you will immediately know that your casting has been successful.
- When trimming the cast coping, avoid grinding into the interior corners, as this leads to rotation of the coping on the abutment.
- Common mistakes such as the wrong alloy composition or poor control of temperatures are not forgiving with the Gold Abutment. Thoroughly following the Straumann® step-by-step procedure is a must for this abutment.



## INFORMATION ABOUT THE SYNOCTA® GOLD ABUTMENT

Modelling aid made from burn-out polymer for easy wax-up and protection of screw channel

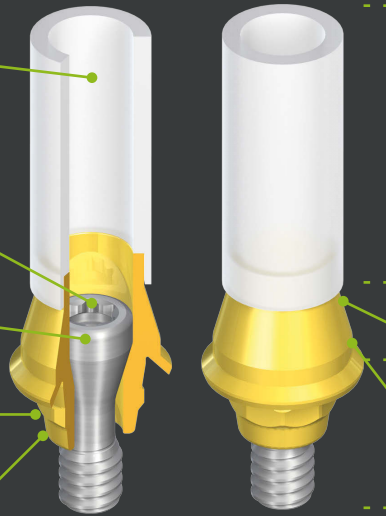


Perfect fit with the SCS screw-driver for unequalled comfort of use

Ready-to-use thanks to its integrated screw

synOcta® connection allows abutment repositioning

8° cone morse taper for reliable vertical positioning



Can be shortened to the height of the occlusal plane or removed

Smooth margin

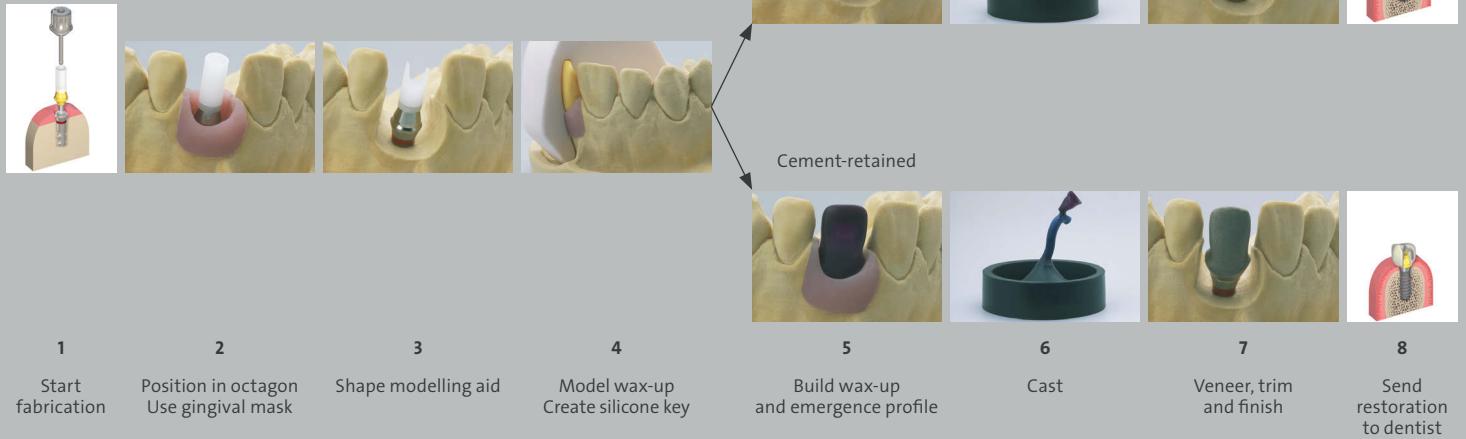
One-piece abutment made from Ceramicor®



Rely on the Straumann original connection. Engineered according to exact knowledge of measurements and tolerances

## PATIENT-SPECIFIC EMERGENCE PROFILE FOR ESTHETIC RESULTS

### WORKFLOW SNAPSHOT



For more information, please refer to the step-by-step procedure "Basic Information on Straumann® synOcta® Prosthetic System" 152.255 or contact your Straumann® representative.